

## SPECIFICATIONS

Part Number	IL-RSS-IRS1.8
Pixel Pitch	1.81mm
Physical Density	302,311pixels/m <sup>2</sup>
LED Arrangement	3 IN 1 SMD
Module Resolution	128x128pixels
Module Dimension	232.8x232.8mm(9.17x9.17in)
Cabinet Resolution	256x256pixels
Cabinet Dimension	465.6x465.6x78mm (18.33x18.33x3.07in)
Cabinet Weight	8.7kg(19.18lb)
Brightness Level	800~1,000nits
Max Power Consumption	180w/panel
Ave Power Consumption	60w/panel
Viewing Angle Operating	120°/120°
Power Source Operating	100-240V AC 50-60Hz
Temperature Refresh	-10°C~+45°C
Rate Protecting Rating	1,000~3,840Hz(Configurable)
Signal Input Source	IP30 Composite, S-Video, Component, VGA, DVI, HDMI, SDI, HD SDI
Max Rigging Verification	7.44m(24.4ft) or 16panels RoHS, EMC, LVD, UL



Strong, Slim, Smart, Saving... S series has it all.

The panels are entirely modular with die-cast aluminum frame, and the PCM is convection cooled with efficient low heat radiation. Black SMD LED is for high contrast and high grey level, and the high refresh rate even at low brightness offers accurate yet vivid rendering that makes S series the stand-out next generation LED display of the future.

---



Rental Panel



High Grey Level



High Contrast



High Refresh



Silence



Low Power



Thin



Light Weight



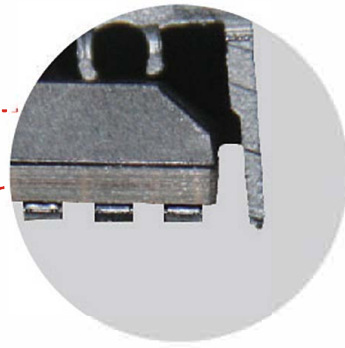
Rental/Fixed



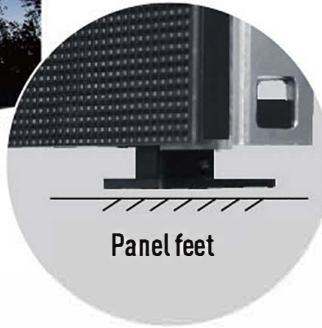
Fixed Panel

As an indoor electronic display, EMC standard is the key feature of S panels. As well, each module is integrated with memory chips to ensure best uniformity via forever calibration function.

---

**01****STRONG**

- Edge protector protects LED on edge against physical damage
- Stand of panel keeps LED on bottom away from floor scratching

**SMART****02**

- Front service optional for easier indoor screen wall application
  - Accurate positioning pin and vertical "Rolling Fast Lock" make screen building easy and flat
- 
- Separate and exchangeable power/control module; without tools
  - Each module is integrated with memory chips to ensure best uniformity via forever calibration function



**03**

**SAVING**



Power saving concept  
with low temperature design

**Cold Display**

**SLIM**

**04**

Seamless-precision die-cast  
aluminum frame



78mm

05

## STACKING AND HANGING SYSTEM OPTIONAL



Stacking System



User friendly system design, total solution  
package for stacking and hanging applications

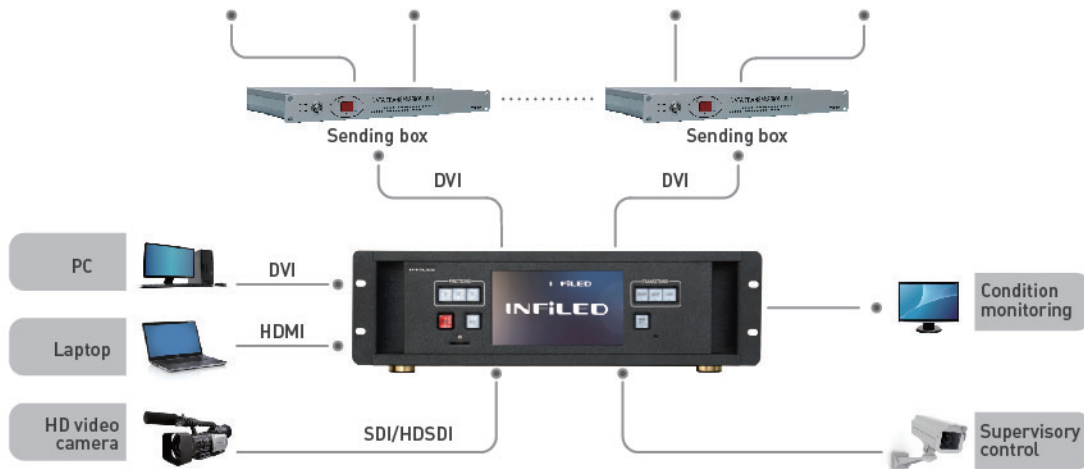


Hanging System



# 06 HD SCREEN SYSTEM SOLUTION

## • HD Screen



## CERTIFICATIONS

FC RoHS CE UL

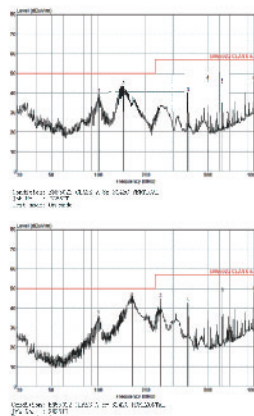
**SGS**

VERIFICATION OF EMC COMPLIANCE

Verification No.: S25M13022006 C2  
 Applicant: Shenzhen INFILED Technology Co., Ltd.  
 Address of Applicant: 155A Building, No. 2 Targous Industrial Park, Shiyuan Town, Shenzhen  
 Product Description: LED display  
 Model No.: INFILED-00119  
 Test Standard: EN 60825-1:2014, EN 60825-2:2014, EN 60950-1:2009, IEC 60950-2:2009

As shown in the Test Report Number(s): S25M13022006 C2

CE



**INFILED** AUTHORIZATION TO MARK

Application: Shenzhen INFILED Technology Co., Ltd.  
 Address: 155A Building, No. 2 Targous Industrial Park, Shiyuan Town, Shenzhen  
 Contact: Mr. Chen  
 Email: chen@infiled.com

Model Name: INFILED-00119

**CERTIFICATE OF COMPLIANCE**

Manufacturer: SHENZHEN INFILED TECHNOLOGY CO., LTD.  
 Model: INFILED-00119

This is to certify that the product described above complies with the requirements of the following standards:  
 CE: EN 60825-1:2014, EN 60825-2:2014, EN 60950-1:2009, IEC 60950-2:2009

Additional Information: See the CE Marking Certificate Declaration for further information.